



# Asbestos Management in Workplaces

Matthew Coggins, Health and Safety Inspector

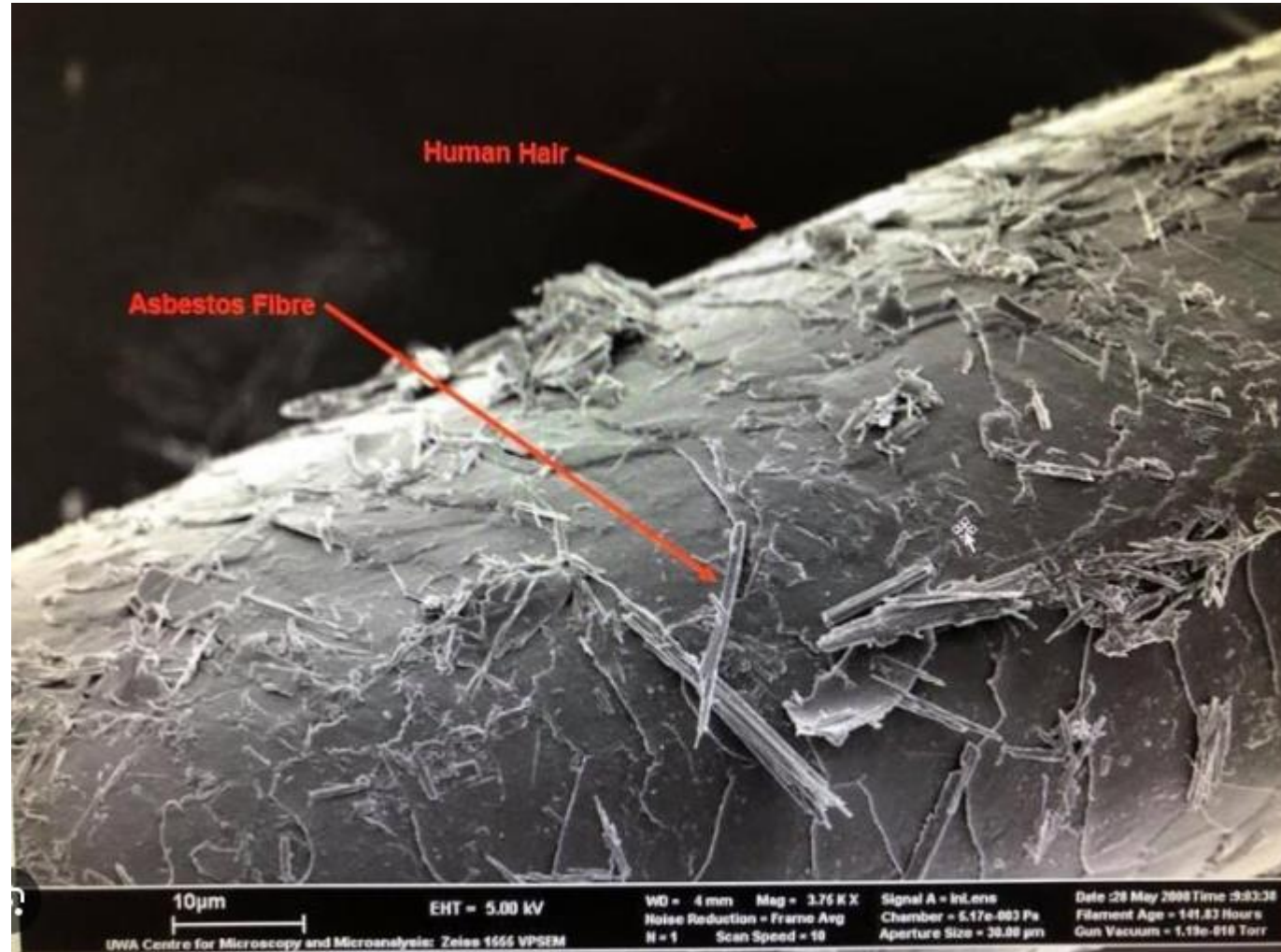


# Introduction

- What is Asbestos?
- What are the health risks of exposure?
- UK and Guernsey Approach to asbestos
- What is an asbestos management plan?
- Asbestos survey and risk assessment
- Measures to control risks from asbestos
- What are arrangements for dealing with accidents, incidents, disturbances and emergencies
- Asbestos removal and control measures
- Reminder
- Questions



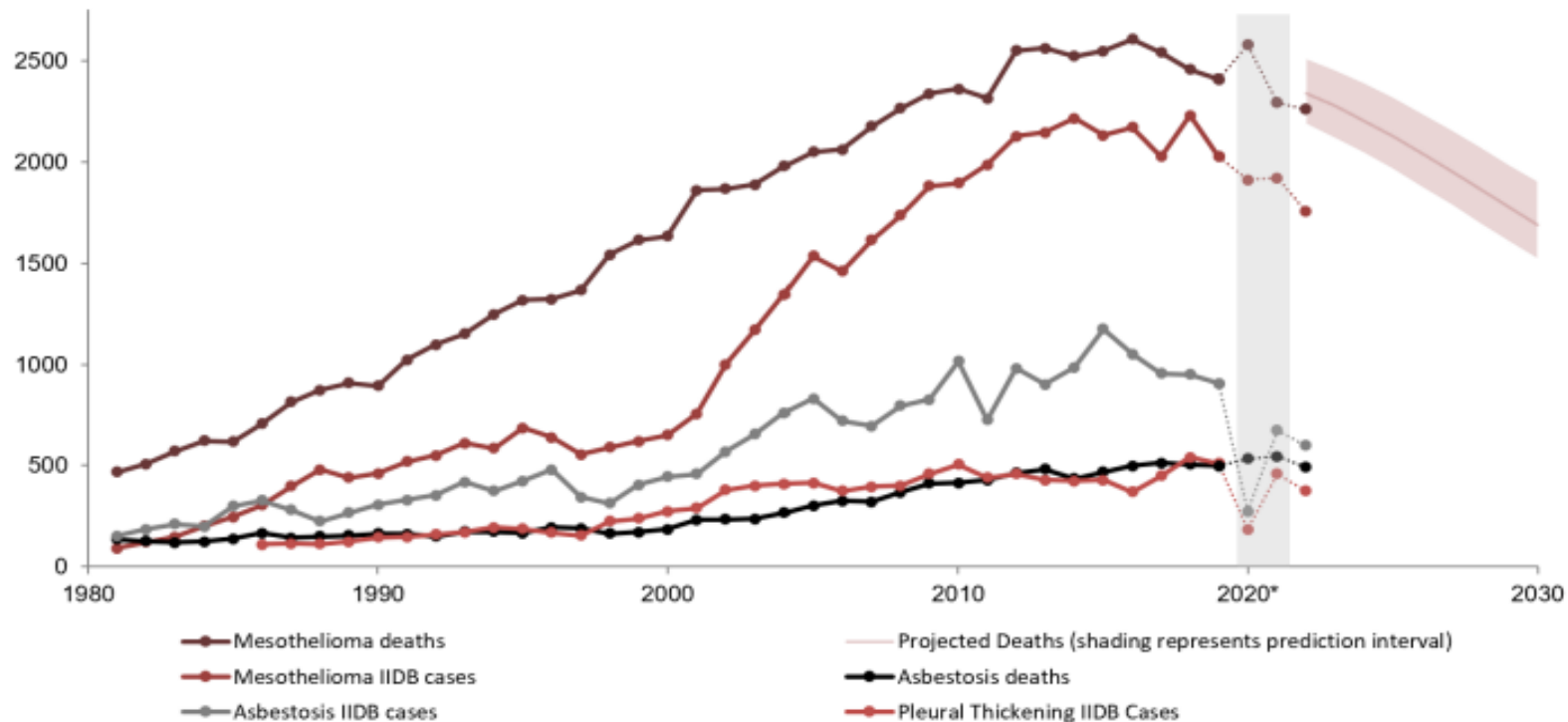
# What is Asbestos?





# Health Risks of Asbestos Exposure

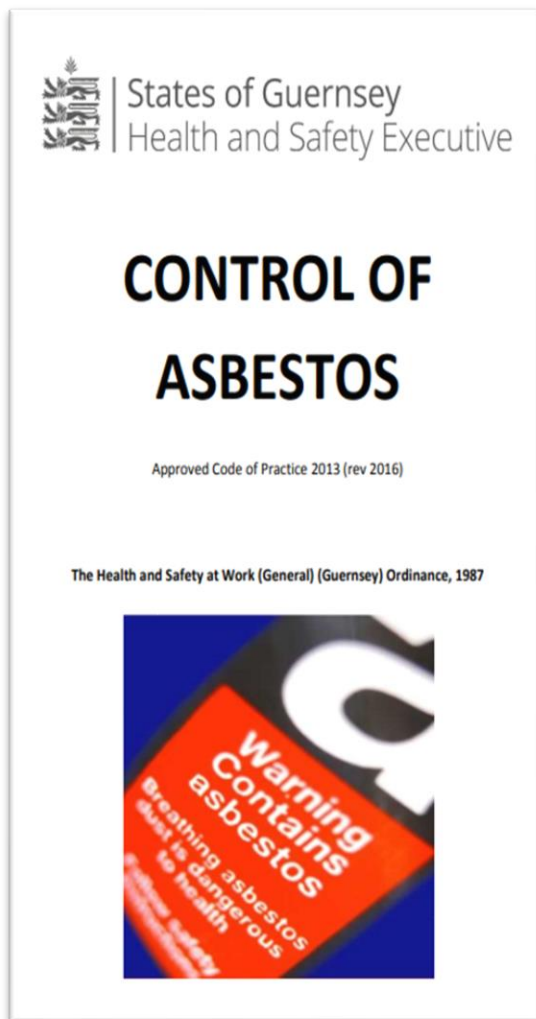
**Figure 1: Mesothelioma, asbestosis, and pleural thickening: time trends in annual deaths and Industrial Injuries Benefit Disablement (IIDB) cases**



[Asbestos Health Statistics - UKATA](#)



# UK and Guernsey approach to Asbestos



Feature	United Kingdom (CAR 2012)	Guernsey (ACoP 2013)
<b>Primary Legislation</b>	Control of Asbestos Regulations 2012	Health and Safety at Work (General) Ordinance, 1987
<b>Duty to Manage</b>	Mandatory for non-domestic premises	Mandatory for non-domestic premises
<b>Licensing Requirements</b>	Required for high-risk asbestos work	Competency required; voluntary registration for notifiable work
<b>Training Obligations</b>	Mandatory for relevant employees	Mandatory for relevant employees
<b>Survey Requirements</b>	Management surveys required for non-domestic premises	Required for non-domestic premises
<b>Notification Period</b>	Prior to certain non-licensed work	Prior to asbestos work
<b>Regulatory Body</b>	Health and Safety Executive (HSE)	Guernsey Health and Safety Executive



# What is an asbestos management plan?

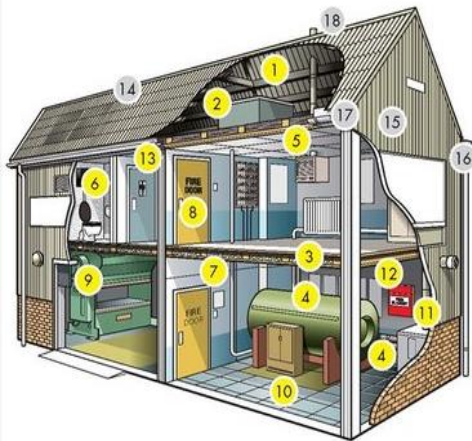
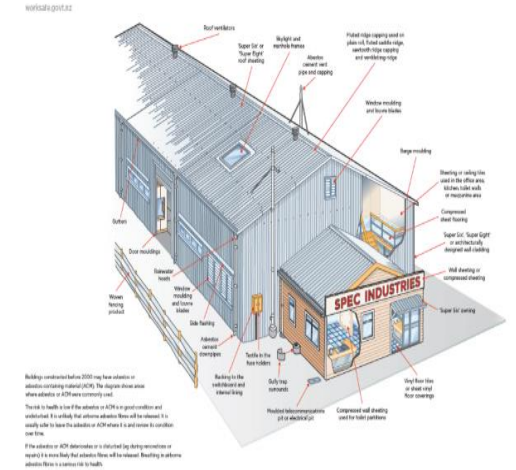


Figure 2- Asbestos Management Plan Flow Chart







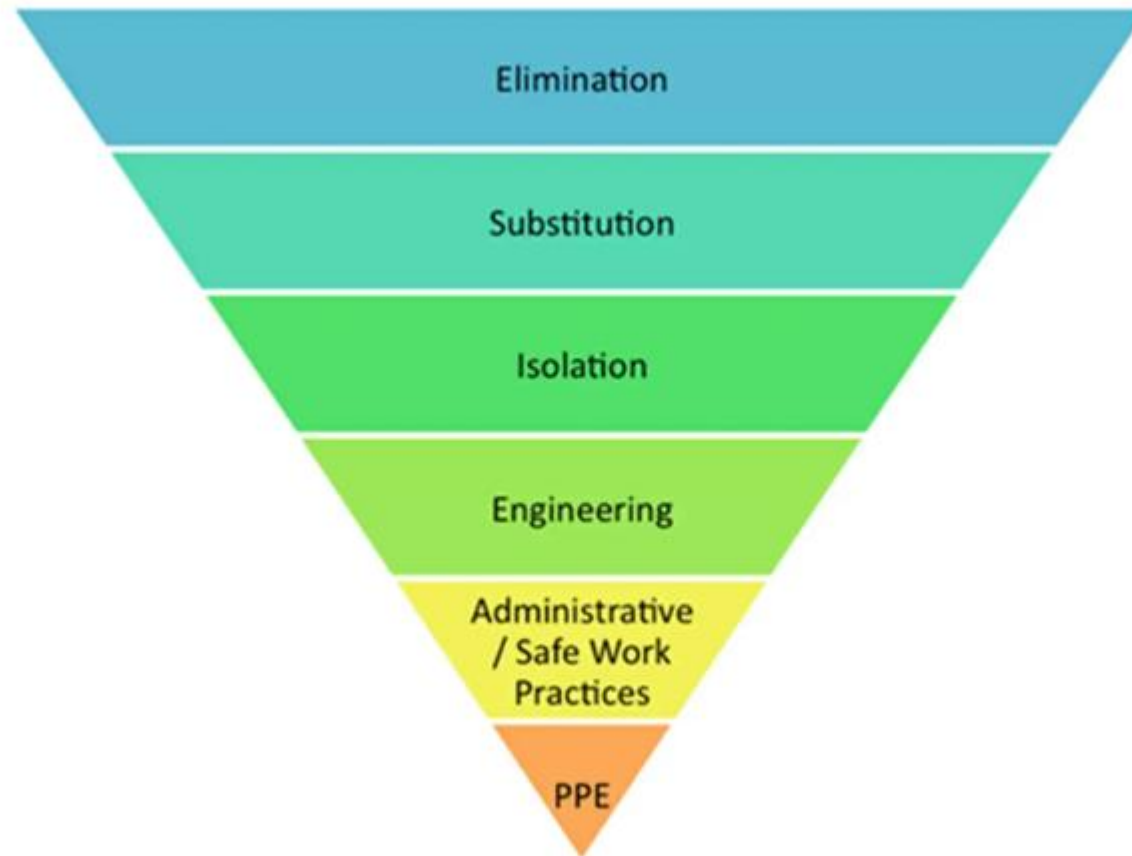
# Asbestos Surveys and Risk Assessments

## Comparison Table

Aspect	Management Survey	Refurbishment & Demolition Survey	Asbestos Risk Assessment
Purpose	Identify ACMs during normal occupancy	Identify ACMs before refurbishment/demolition	Assess risk of exposure from identified ACMs
When Required	During building occupation and use	Before any refurbishment or demolition work	After survey; ongoing management
Intrusiveness	Minimal	Fully intrusive	Non-intrusive
Outcome	Asbestos register and management plan input	Ensures safe removal/management before work	Risk analysis and control measures



# Measures to control risks from asbestos fibres

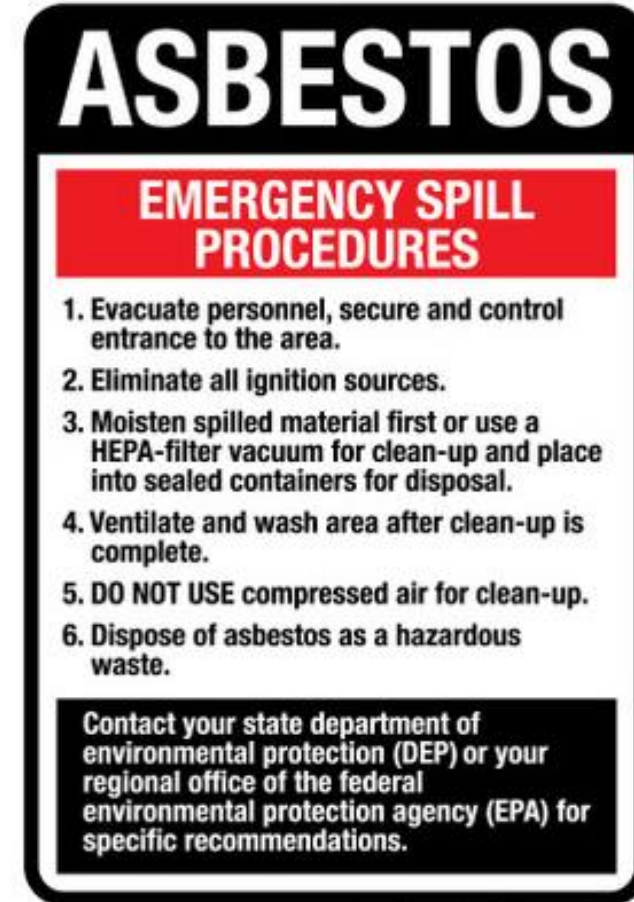






# What are arrangements for dealing with accidents, incidents, disturbances and emergencies!

- In the context of **asbestos management**—and specifically under the **Control of Asbestos ACoP (Guernsey)**—the term "arrangements for dealing with accidents, incidents, disturbances, and emergencies" refers to the **prepared procedures and actions** an organisation must have in place to **respond quickly and safely** to unplanned situations where **asbestos exposure might occur**.





# Asbestos Removal and Control Measures

- Licensed contractors must be used for Notifiable asbestos removal.
- Safe working procedures include:
  - Sealing off affected areas.
  - Negative pressure enclosures
  - Using personal protective equipment (PPE & RPE)
- Safe removal techniques including
  - Wetting asbestos to reduce airborne fibers. (Surfactants etc)
  - Shadow Vacuuming
  - Water Injection systems
- Safe disposal
  - Double bagging in marked bags
  - Sealed skips for transportation



Figure 3 – Typical asbestos removal enclosure



# Reminder! An ACoP's legal status.

 States of Guernsey  
Health and Safety Executive

## CONTROL OF ASBESTOS

Approved Code of Practice 2013 (revised 2017)

The Health and Safety at Work (General) (Guernsey) Ordinance, 1987



**“If you are not following this what are you following?”**



# Questions?







# Further reading and sources

- [www.gov.gg/asbestos](http://www.gov.gg/asbestos)
- [The duty to manage asbestos in buildings: Overview – HSE](#)
- [Control of Asbestos ACoP 2013 \(revised 2017\)](#)
- [UKATA The UK's Biggest Workplace Killer](#)
- [Asbestos Essentials](#)
- [Worksafe New Zealand](#)
- [Guernsey Mortality Trends](#)